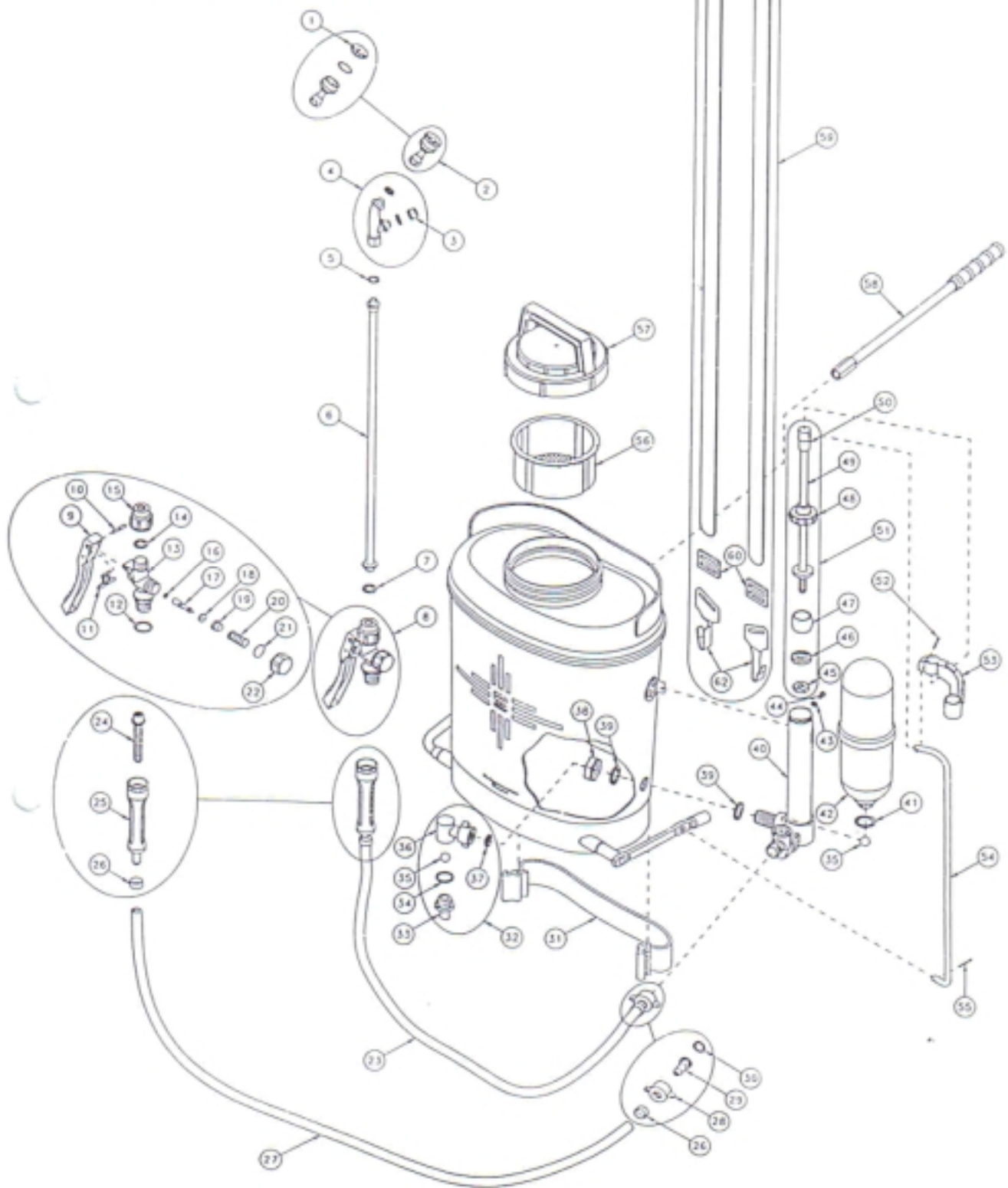


PB-16 & PB-20 SPARE PARTS LIST (NEW VERSION)



KNAPSACK SPRAYER SPARE PARTS LIST

PB-16 AND PB-20 WITH (P1) AUTOMATIC RELEASE (New Version)

NO	CODE NO	SAME AS CODE NO	DESCRIPTION
1	LSA / 4 /1	LSA/4/1	NOZZLE CAP
2	LSA / 4	LSA / 4	LIQUID SPRAY ADJUSTABLE NOZZLE
3	TE / 2AC (P)	TE / 2AC (P)	LOCK NUT
4	TE / 2A (P1)	TE / 2A (P1)	TWIN ELBOW
5	333 W	MB/45 W	WASHER
6	331	MFB/46-18"	SPRAYING LANCE
7	332 W	MB/47W	WASHER (345 W)
8	321 / CPT (P1)	~	
8(a)	321 (P1)	MB/41CPT(P1)	P1 AUTOMATIC RELEASE COMPLETE
9	323 (P1)	MB/43 (P1)	P1 LEVER FOR AUTOMATIC RELEASE
10	323 A	MB/42A	PIN
11	324	MBP/44	FIXTURE CLIP FOR LEVER NO. 323 (P1)
12	321 R	MB/58R	P1 'O' RING 116
13	321 A (P1)	MB/41(P1)	P1 RELEASE BODY
14	345 W	MB/47W	WASHER
15	ADT / 321 (P1)	ADT/41/46A-02(F)PA	P1 ADAPT. FOR AUTO. RELEASE TO LANCE
16	325 R	MB/40R(N)	RUBBER 'O' RING 008
17	325	MB/40A	SPINDLE
18	326	MB/39A	RUBBER DISC FOR NO. 327
19	327	MB/38A(P)	VALVE
20	328	MB/37A	SPRING FOR AUTOMATIC RELEASE
21	329 W	MB/36W(A)	WASHER FOR PLUG
22	330	MB/35A(P)	PLUG FOR AUTOMATIC RELEASE
23	346 (P1)	MB/55CPT(P1)	P1 RUBBER HOSE C/W CHAMBER & UNION
24	322 (P1)	MB/59S(P)	P1 STRAINER FOR CHAMBER
25	341 (P1)	MB/59(P1)	P1 CLEANING CHAMBER
26	342	MB/55CR 'MOO'	HOSE CLIP (MOO)
27	340	MB/55	RUBBER HOSE
28	344	MB/53P	UNION
29	343	MB/54P	NIPPLE FOR HOSE
30	345 W	MB/47W	WASHER
31	304	MBP/1CP	STAND GUARD
32	312 / CPT	MBP/24CPT(P)	SUCTION VALVE COMPLETE
33	310	MBP/24 P	RISING TUBE
34	320 W	MB/20W	WASHER
35	311	MB/17	BALL BEARING
36	312	MB/22 P	SUCTION VALVE BODY
37	312 W	MB/22W	WASHER
38	318	MB/21P	SCREW
39	317 W	MB/20W	WASHER
40	315 / CPT	MBP/18CPT (PA)	PUMP CYLINDER COMPLETE
40(a)	315SHA	MBP/15SHA	Bracket
40(b)	315SHB	MBP/15SHB	Screw of Bracket
40(c)	315SH	MB/15SH	Pump Cylinder Holder
40(d)	315SHW	MBP/15SHW	Lock Washer
41	317 W	MB/20W	WASHER

KNAPSACK SPRAYER SPARE PARTS LIST

PB-16 AND PB-20 WITH (P1) AUTOMATIC RELEASE (New Version)

NO	CODE NO	SAME AS CODE NO	DESCRIPTION
42	319	MB/25P	AIR CYLINDER COMPLETE
43	315 W	MB/16W-1	SPRING WASHER
44	315 S	MB/16-1	SCREW
45	309	MB/30	NUT FOR PISTON
46	308	MB/31	WASHER FOR PISTON (LOWER SIDE)
47	307	MB/32	PISTON
48	314	MB/14 P	MILLED NUT FOR PUMP CYLINDER
49	306	MB/33 (2G)	PISTON ROD BRASS WASHER (UPPER SIDE)
		MB/33VC	
50	305	MB/34	NIPPLE FOR PISTON ROD
51	306/CPT	MFB/33CPT(2G)	PISTON ROD COMPLETE
52(a)	313A	MB/29A	PIN (IR) (3/32" X 5/8")
52(b)	313C	MB/29C	PIN (3/32" X 3/4")
53	MB/63(P)	MB/63(P)	LANCE LEVER CLIP (OPTIONAL)
54	313	MFB/28	PULL BAR
55	313 B	MB/29B	PIN (1/8" X 5/8")
56	303	MB/7P(S)	STRAINER
57(a)	301	MBP/8	COVER OF TANK
		MBP/8CPT(P1)	COVER OF TANK C/W Rubber Ring
57(b)	301R	MBP/08AR-1	COVER RING
58	347 (A)	MFB/13 (A)	Pump Handle Complete with Hand Sleeve
59	337 / CPT	MBP/11F-02	Shoulder Strap Complete (Per Pair)
60	338	MB/12B	STRAP HOLDER
61	337	MBP/11F-2	SHOULDER STRAP Only (Piece)
62	339	MBP/10	HOOK (PER PAIR)
63	MB/11B	MB/11B	Plastic Pad for Shoulder Strap (Optional)
64	MB/61-02(PB9)	~	WASHERS + LSA/4/1(R)
65	MBP/62-02(P1)BM# 1	~	ACCESSORIES IN PACKAGE
66	MB/W-01(P1)#1	~	WASHER SET
67	MB/W-01(P1)	~	WASHER SET

REMARK



Combination item



Complete set item / Component

KNAPSACK SPRAYER PB-16 & PB-20 WITH 321 (P1)










PB-16



PB-20

321(P1)

STANDARD PACKING

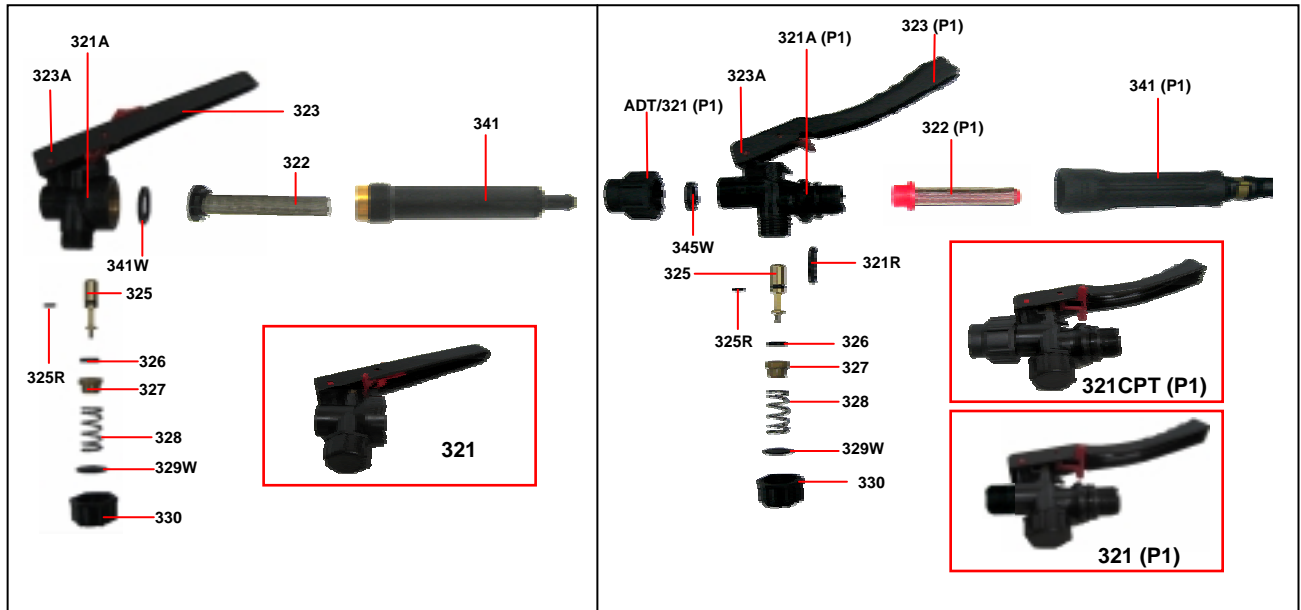
No.		Item Code	Description	Quantity
1.		TE/2A(P)	Twin Elbow	1 pc
2.		322(P1)	Filter 50 mesh	1 pc
3.		LSA/4(LG)	Liquid Adjustable Nozzle	1 pc
4.		303	Plastic Strainer 30 mesh	1 pc
5.		MB/61-02(PB9)	Washer Set	1 set
6.		331	Spraying lance	1 pc
7.		347(A)	Pump Handle	1 pc

MODEL	PB-16	PB-20
Tank Capacity	16 Litres	19.15 Litres
Pump Type	Piston	Piston
Pump Action	Left/Right Hand	Left/Right Hand
Maximum Pressure	8.00 Kg/cm ²	8.00 Kg/cm ²
Working Pressure	2.0 – 4.0 Kg/cm ²	2.0 – 4.0 Kg/cm ²
Measurement	(448 x 253 x 476)mm	(448 x 253 x 530)mm
Net Weight	4.30 Kg	4.45 Kg
Gross Weight	5.20 Kg	5.50 Kg

THE DIFFERENCES BETWEEN MODEL 321 AND MODEL 321(P1)

Model Part No. 321

Model Part No. 321(P1)



Code	Spare Part Description	Code	Spare Part Description
321	Automatic Release Complete Release	321/CPT (P1)	P1 Automatic Release C/W Adaptor
321A	Body	321 (P1)	P1 Automatic Release Complete
322	Strainer for Chamber	321A (P1)	P1 Release Body
323	Lever for Automatic Release	321R	P1 'O' Ring
323A	Pin	ADT/321 (P1)	P1 Adaptor for Automatic Release to Lance
325	Spindle	322 (P1)	P1 Strainer for Chamber
325R	Rubber O Ring	323 (P1)	P1 Lever for Automatic Release
326	Rubber Disc for No. 327	323A	Pin
327	Valve	325	Spindle
328	Spring for Automatic Release	325R	Rubber O Ring
329W	Washer for Plug	326	Rubber Disc for No. 327
330	Plug for Automatic Release	327	Valve
341	Cleaning Chamber	328	Spring for Automatic Release
341W	Washer	329W	Washer for Plug
		330	Plug for Automatic Release
		341 (P1)	P1 Cleaning Chamber
		345W	Washer